



LCR Proprietas

Environmental Management System

ABOUT

What is LCRP-EMS?

LCRP-EMS is a platform specifically designed for the UK social housing market.

LCRP-EMS uses IOT and Cloud technology to change the way social landlords interact with properties.

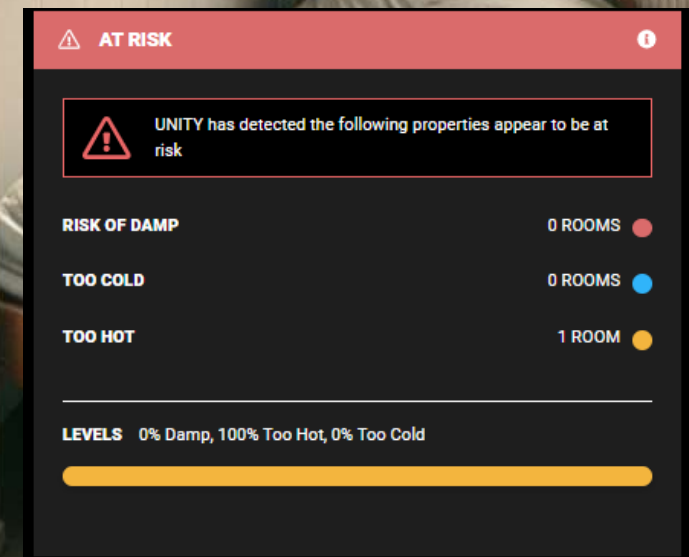
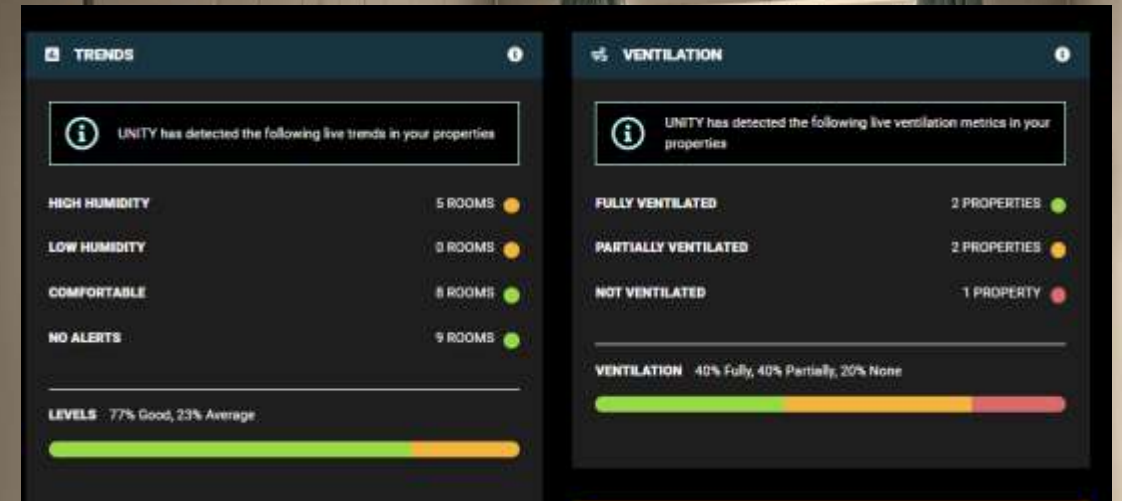
LCRP-EMS centralises multiple data streams into one central data source.

LCRP-EMS delivers actionable data insights to tenants and social landlords alike.



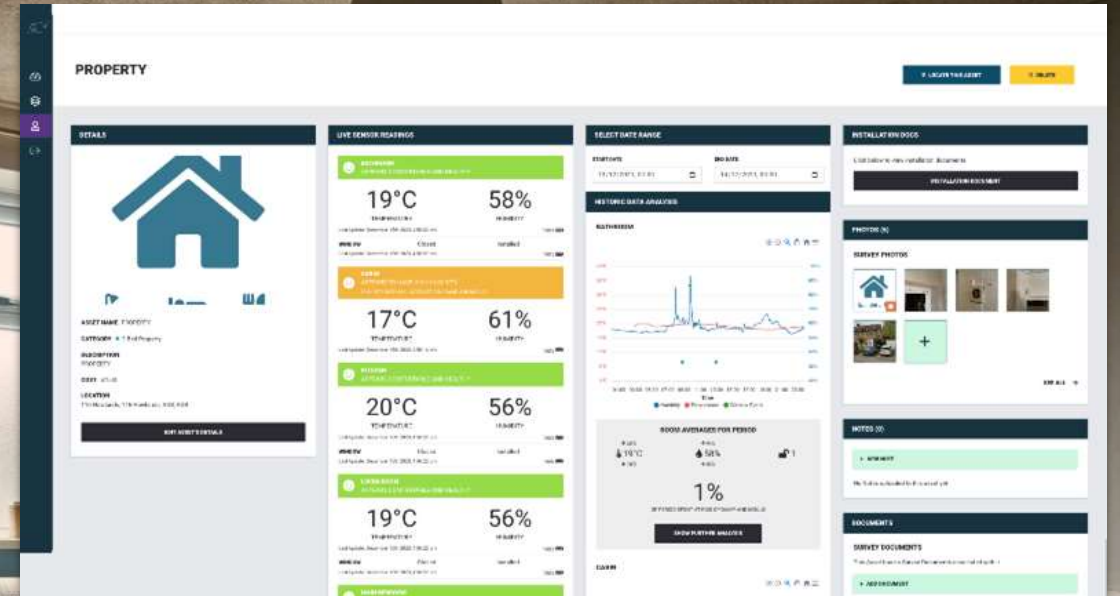
Key Challenges of 2024/25

- Damp, Mould and Condensation
- High Maintenance Costs
- Lack of Data and Visibility
- Resident Engagement and Education



ABOUT LCRP-EMS

LCRP-EMS gives social landlords access to data to enhance the ability to deliver specific, proactive, data driven property maintenance.




LCRP-EMS provides meaningful, educational data to residents empowering individuals to combat damp and mould within their homes.

Damp and Mould

Detection & Prevention

LCRP-EMS measures ventilation, temperature and humidity. By providing good, sensor-based data, residents and social landlords can identify and prevent the conditions that lead to a build-up of damp, mildew and mould

BATHROOM

 **BATHROOM APPEARS TO HAVE VERY HIGH HUMIDITY.**
HUMIDITY OVER 70% SEVERELY INCREASES RISK DAMP AND MOULD

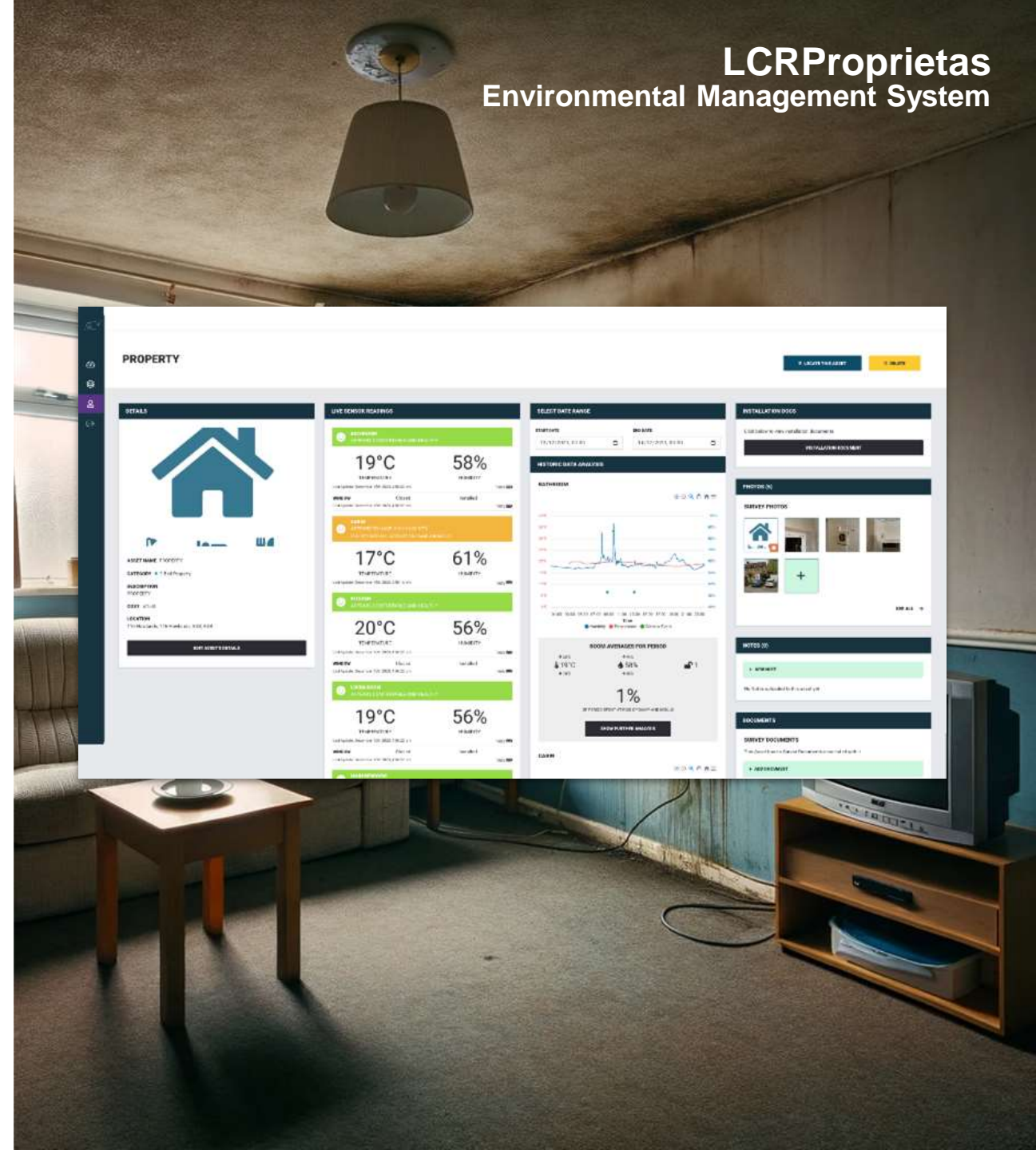
24°C
TEMPERATURE

96%
HUMIDITY

Last Update: May 10th 2024, 4:38:01 pm 100%

WINDOW: CLOSED
INSTALLED

Last Update: May 10th 2024, 4:38:00 pm 100%



Solution

Connected Homes

LCRP-EMS deploys IOT devices to monitor Temperature, Humidity and Window events in customer homes

KITCHEN
APPEARS COMFORTABLE AND HEALTHY

20°C
TEMPERATURE

Last Update: December 15th 2023

WINDOW Closed

Last Update: December 15th 2023

BATHROOM
APPEARS TO HAVE HIGH HUMIDITY.
HUMIDITY OVER 60% INCREASES RISK DAMP AND MOULD

20°C
TEMPERATURE

Last Update: December 18th 2023, 9:09:19 am

WINDOW Closed

Last Update: December 18th 2023, 9:09:18 am

LIVING ROOM
APPEARS TO HAVE VERY HIGH HUMIDITY.
HUMIDITY OVER 70% SEVERELY INCREASES RISK DAMP AND MOULD

19°C 80%
TEMPERATURE HUMIDITY

Last Update: December 18th 2023, 9:10:39 am 100%

WINDOW Closed Installed

Last Update: December 18th 2023, 9:10:38 am 100%

LCRProprietas
Environmental Management System

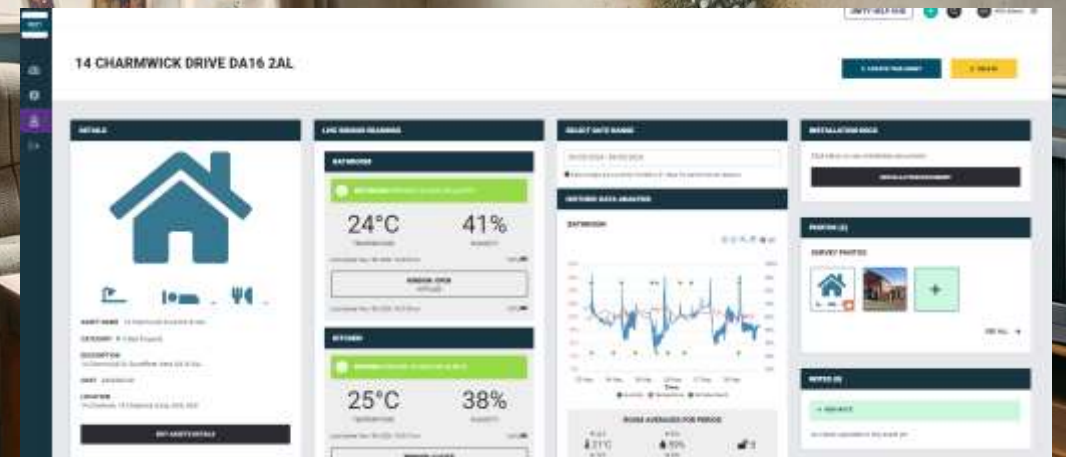
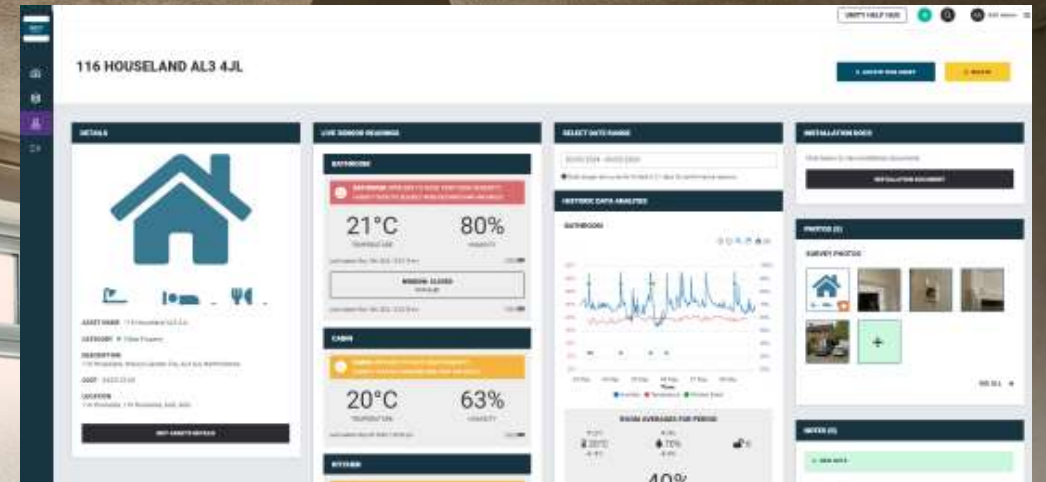


Solution

Residential Page

LCRP-EMS residential page offers real time insight into property conditions including:

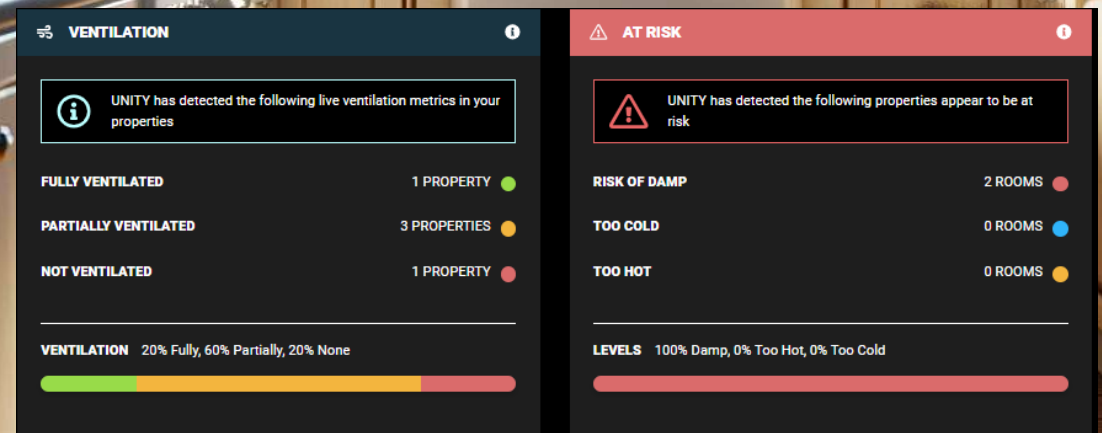
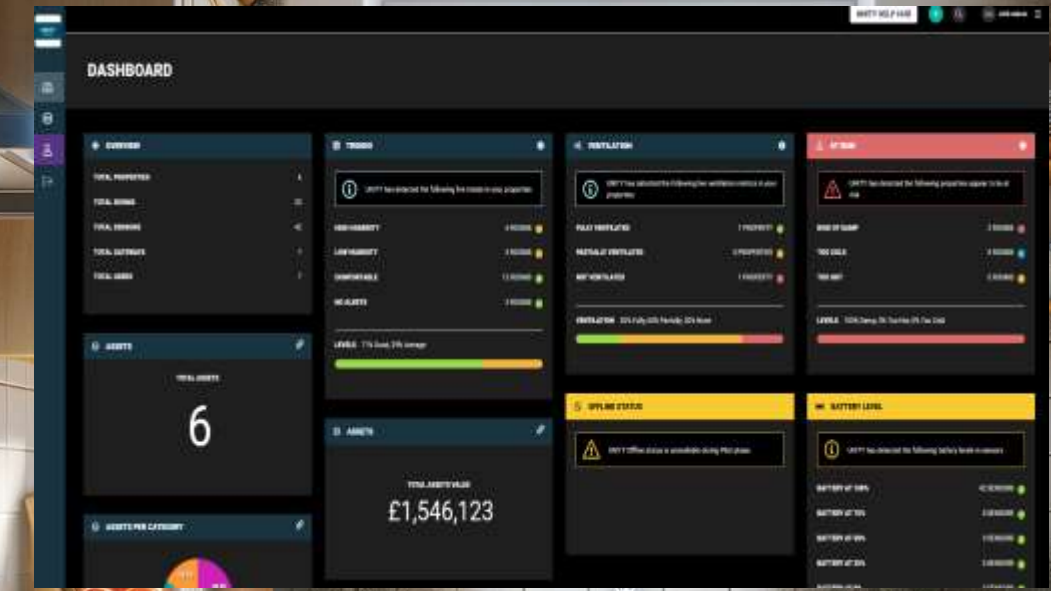
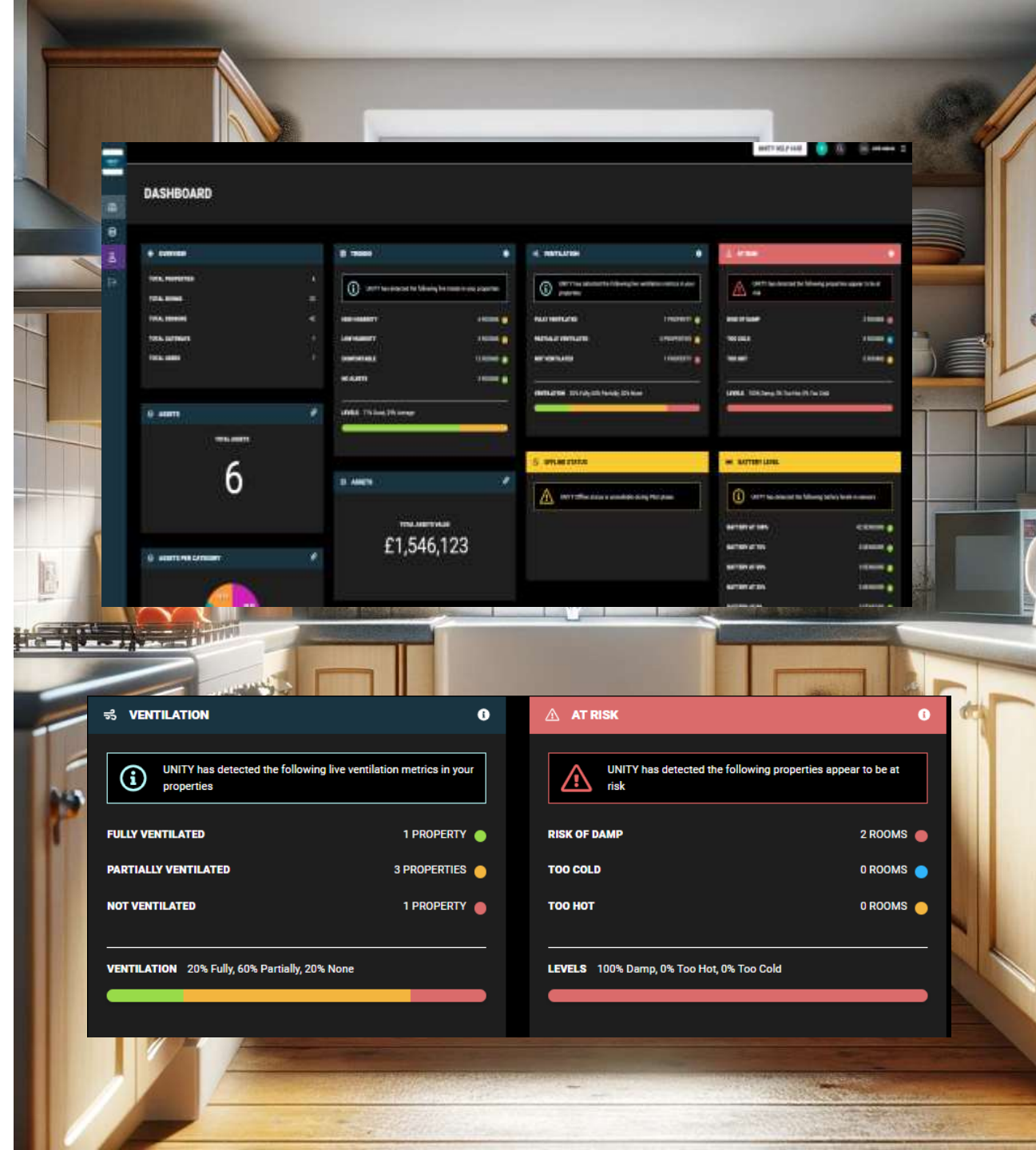
- Live Readings with rag status (Red, Amber, Green)
- Historical Graphed Data
- Averaged and Aggregated Data
- Asset Management Functions



Solution Management Interface

LCRP-EMS management interface provides an overview of monitored properties, giving a way to monitor the entire portfolio. With it displaying:

- Key trends from sensor data
- Properties at risk from damp and mould, fuel poverty, and extreme heat.
- Offline sensor and battery management.

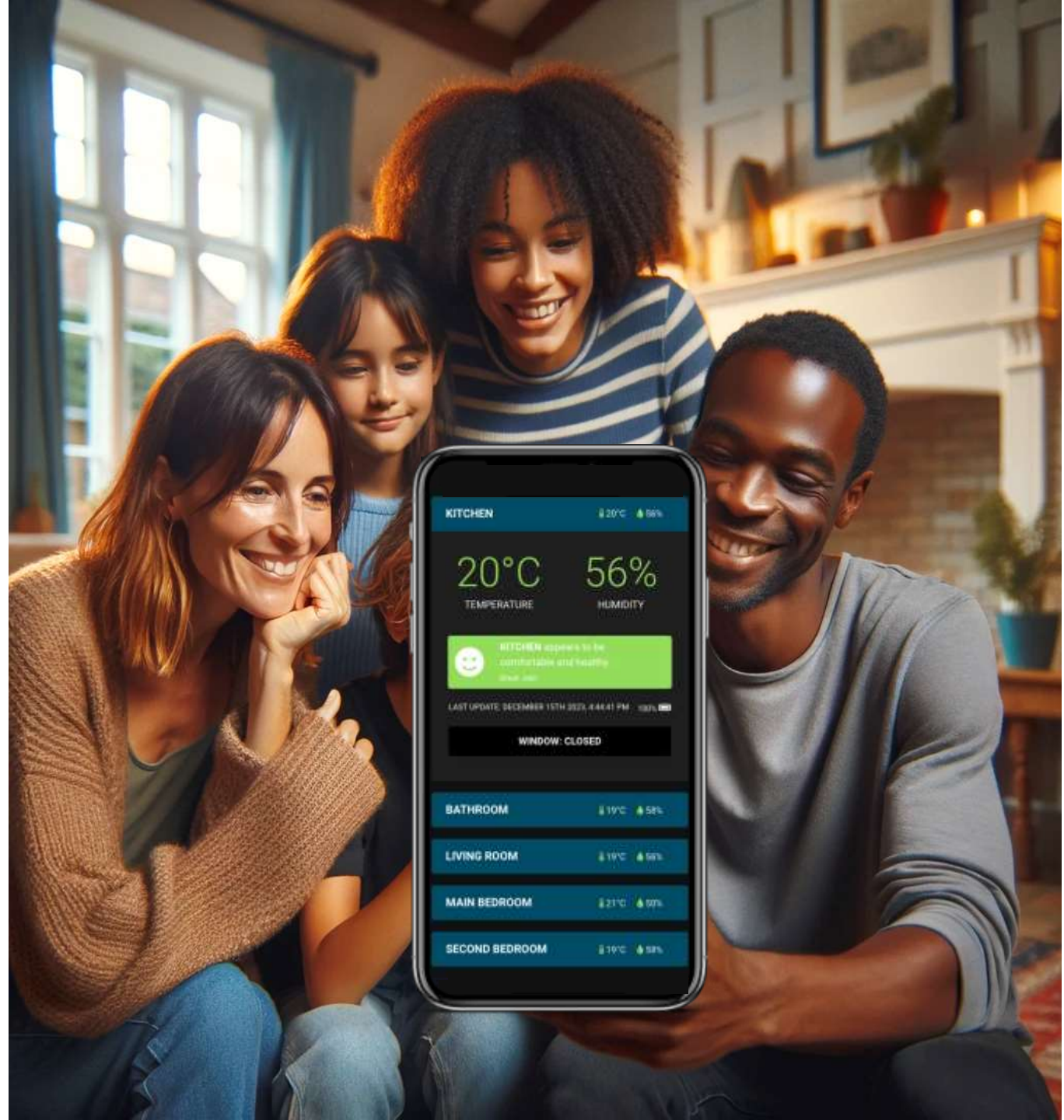


Solution

User Interface App

LCRP-EMS has a companion app displaying live home data in a clear, easy to read format, with direct access to our Help Hub.

- Live whole home readings.
- Personalised tips for customer homes
- Access to Help Hub materials
- Supports Multi Language



Solution

Additional Info

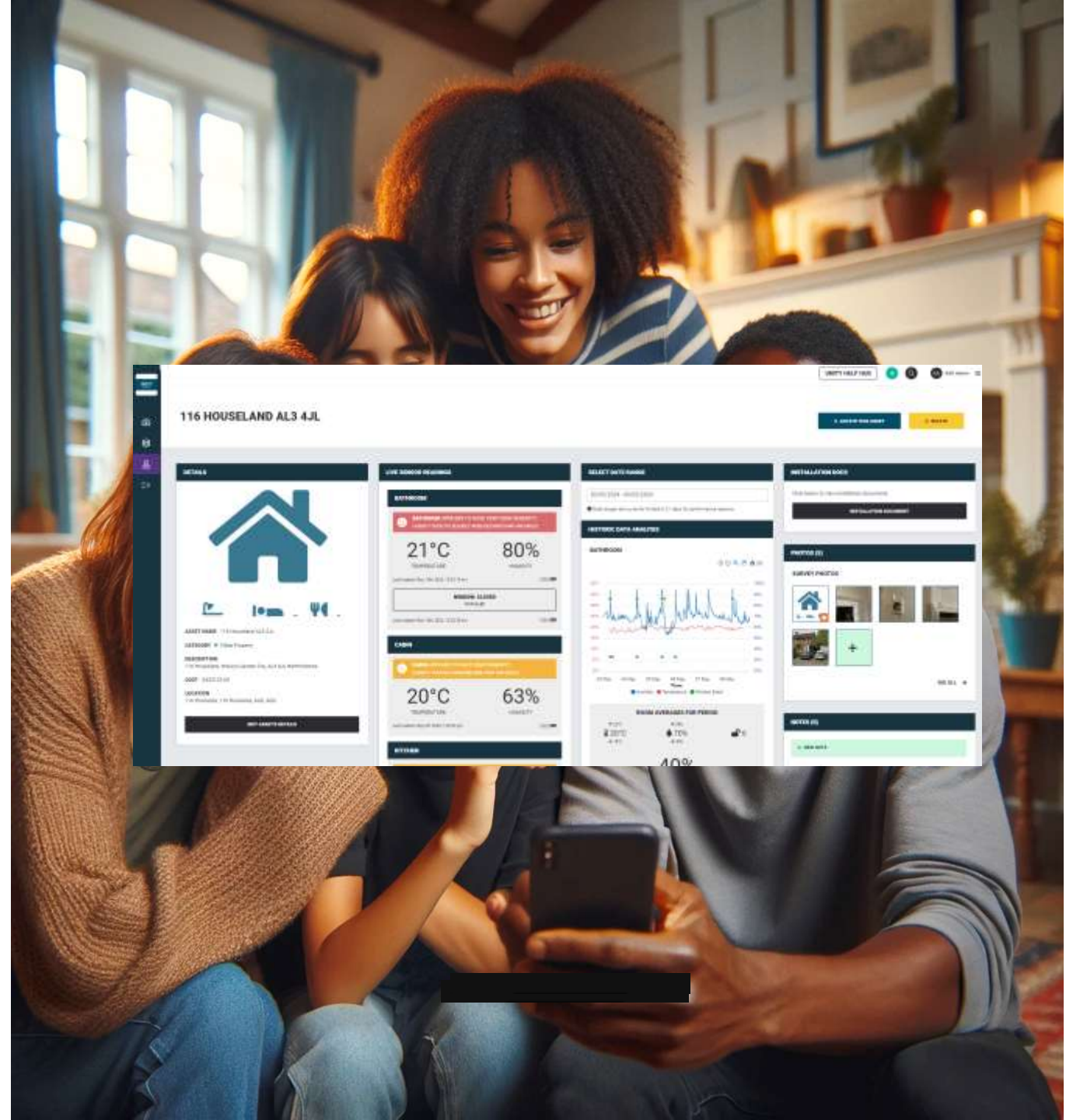
-All sensors are connected via Bluetooth and our gateway is cellular enabled, **LCRP-EMS does not require household WIFI**

-All sensors are wireless and **do not require cabling**

-**LCRP-EMS** has a fast installation process and can be **installed in under 20 minutes**

-**LCRP-EMS** gateway costs **less than £0.50** per year to run

-Organisations **have full** access to LCRP-EMS, with customers having access to **live, read only data.**



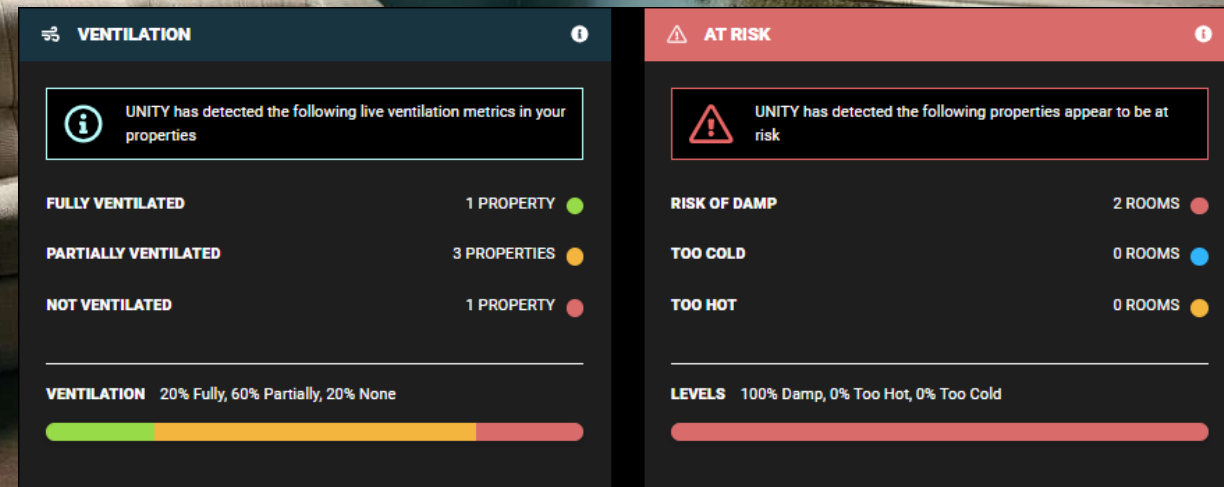
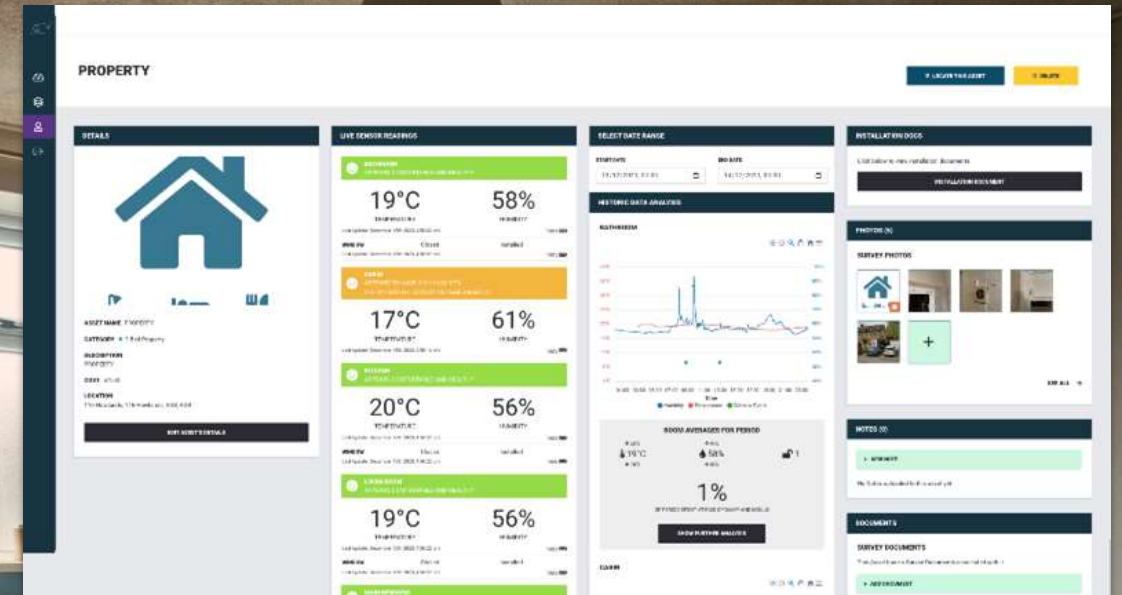
Results and Benefits

LCRP-EMS

LCRP-EMS lets social landlords access previously unavailable data and insights from your property portfolio and tenants

- Detects and combats damp and mould helping both tenants and social landlords.
- Helps reduce **fuel poverty** through education and insights.
- Helps tenant **education** through our LCRP-EMS Help Hub.
- Helps identify where remedial work is needed **most urgently**
- Identifies if **remedial work** has been successful.
- Provides **data** in legal cases.
- Helps adherence to **Awaab's Law** and government key messaging
- Assists with **Data Driven Decision Making**

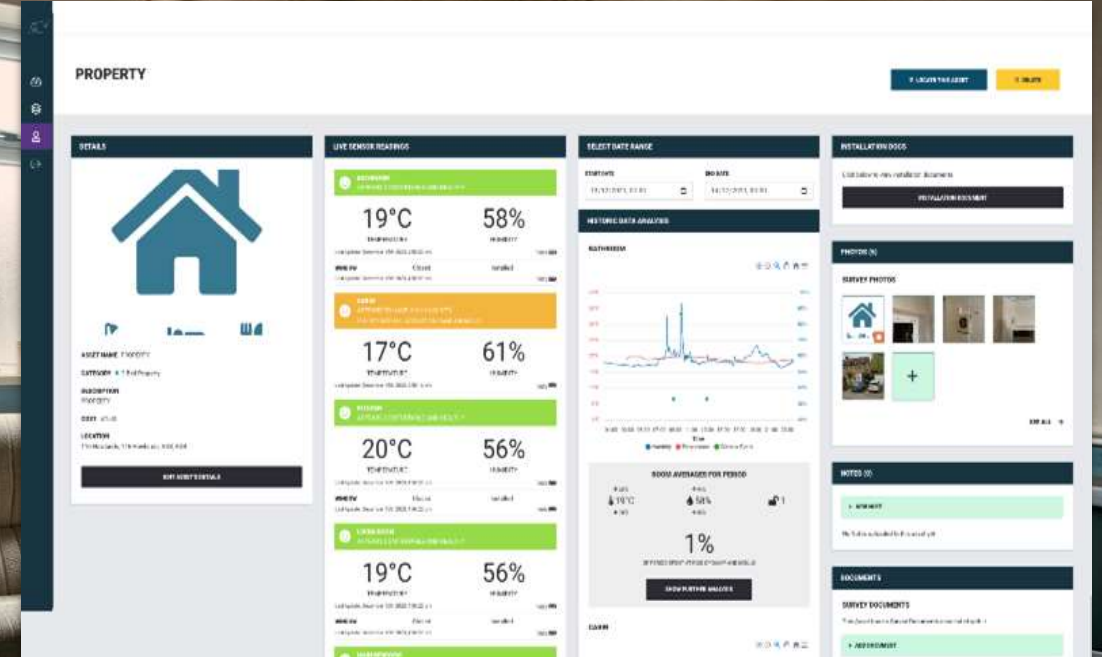
LCRProprietas
Environmental Management System



ABOUT LCRP-EMS Future

LCRP-EMS is never standing still, and we have our own in-house development team. We currently have the below areas we have road mapped currently:

- Room Alerts
- Hierarchy League Tables
- Notifications



An architectural rendering of a modern social housing complex. The scene shows a courtyard with people of various ages interacting. In the foreground, a group of elderly people sits on a wooden bench, looking at a large digital display. Other people are seen walking, talking, and sitting at tables in the courtyard. The buildings are multi-story with large windows and balconies. The overall atmosphere is bright and community-oriented.

LCR Proprietas

Environmental Management System

We make social housing smarter and safer,
together!